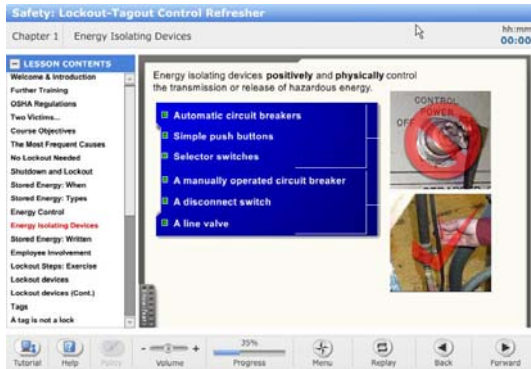


## Safety: Lockout-Tagout Control Refresher

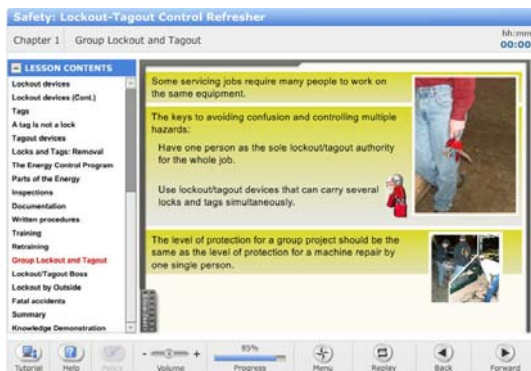
This course provides information regarding the control of hazardous energy and work under the protection of a lockout/tagout permit. The intent of the course is to provide basic information on lockout/tagout practices and the significance of lockout/tagout devices that help identify and control hazardous energy sources.



### **Objectives:**

- Define lockout/tagout terms
- Identify the purpose and use of the lockout/tagout program
- Identify the general requirements of lockout/tagout
- Identify the limitations of tags used in the lockout/tagout program
- Identify the hazards and consequences of operating machines or equipment that have been locked out or tagged out

**Audience:** All persons whose jobs will require the operation or use of a machine or equipment on which service or maintenance is to be performed, or whose duties will require that person to work in an area in which such servicing or maintenance is being performed.



**Primary Regulations:** OSHA 29 CFR 1910.147, The Control of Hazardous Energy

**Related Regulations:** OSHA 29 CFR 1910.134, Respiratory Protection; OSHA 29 CFR 1926.59, Hazard Communication Occupational Health and Environmental Controls; OSHA 29 CFR 1926.21 Safety Training and Education

**Duration:** 15-30 minutes



NEW YORK, NEW YORK  
646/415-8002

DENVER, COLORADO  
303/325-5889

LOS ANGELES, CALIFORNIA  
213/291-3072

[WWW.GLOBALCOLLABORATIONPARTNERS.COM](http://WWW.GLOBALCOLLABORATIONPARTNERS.COM)

CONTACT US AT [INFO@GCPWORLD.COM](mailto:INFO@GCPWORLD.COM)

Copyright 2007 Global Collaboration Partners LLC